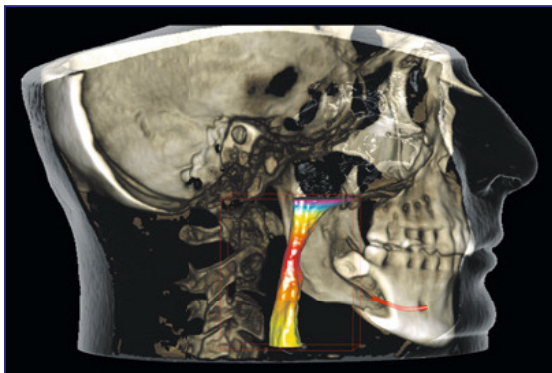


Announcing Advanced Cone Beam 3D Imaging Technology

What does this mean for our patients?



Cone Beam 3D Technology provides imaging of the patient's entire dentition area, including the upper and lower jaw, for clear and accurate diagnostics and treatment planning of:

- Orthodontics**
- Oral surgery**
- Dental implants**
- Airway**
- TMJ (jaw joints)**
- Endodontics (root canals)**
- Periodontics**

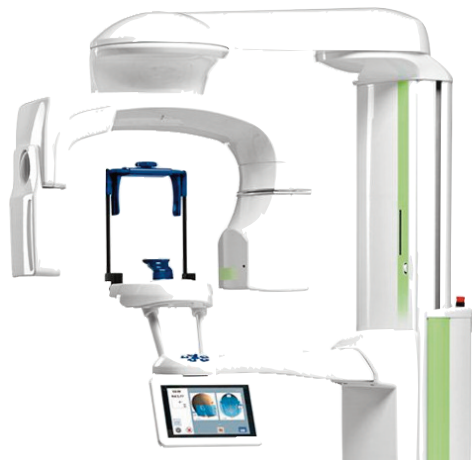
For dental implants, cone beam radiographs provide images that pinpoint the mandibular nerve canal for pre-surgical planning for **ideal positioning**.

The scanning process is fast and comfortable with patients exposed to only **minimal levels of radiation**.

The unique, open design helps patients **avoid claustrophobic** feelings.

The scanning technology is **suitable for children** and affords **easy wheelchair access**.

AN EXAMPLE: For one patient, we found an infected site that hadn't shown up on conventional x-rays. She'd mentioned the tooth for months and, although it had been looked at several times, exams or x-rays weren't showing a problem. Using the cone beam scan, a deep infection was clear in 3D. The site was promptly opened and the infection was precisely where the scanner indicated. This may have prevented the need for a root canal or even future tooth loss.



PLANMECA